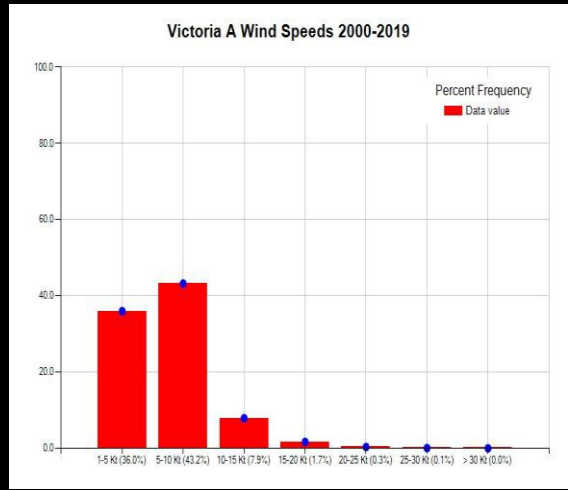
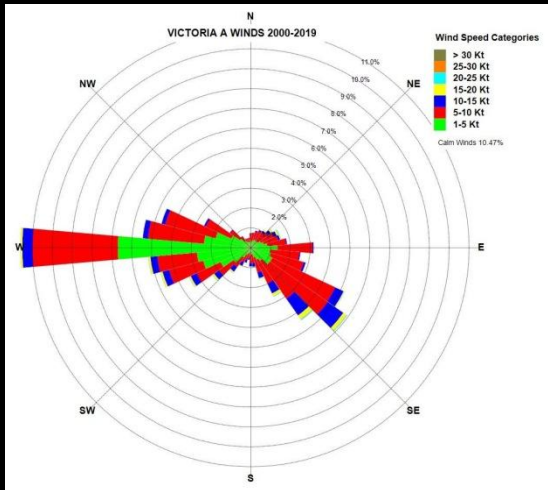
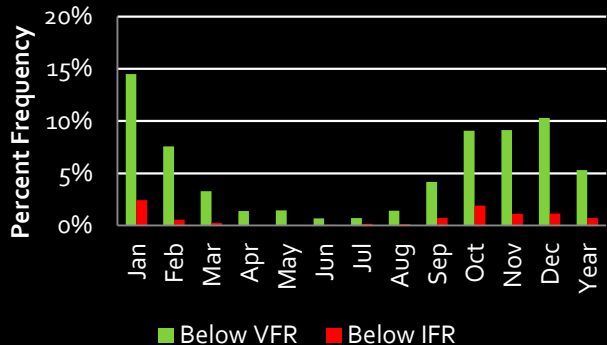


Victoria International, BC

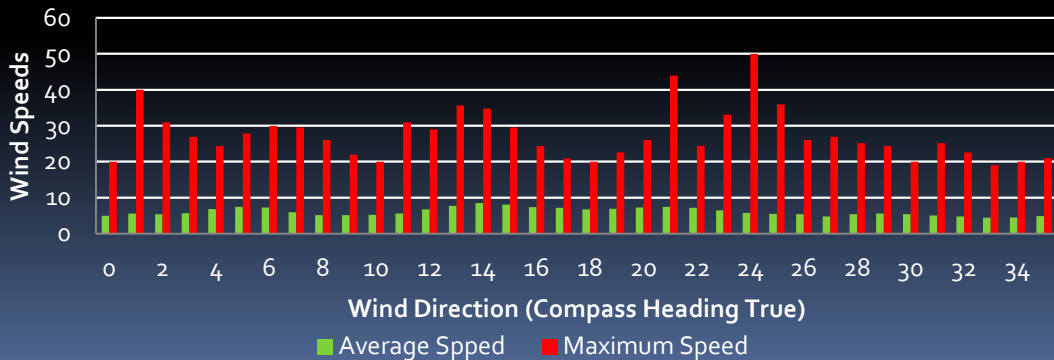
Flying Weather By Month Victoria A, BC 2000-2019



Flying Weather By Time of Day (UCT) Victoria A, BC 2000-2019



Wind Speeds By Direction (Knots) Victoria A, BC 2000-2019



Victoria A, BC Tables

Flying Weather by Time of Day

Hour(UCT)	Below VFR	Below IFR
0:00	2.74%	0.10%
1:00	2.82%	0.29%
2:00	3.33%	0.30%
3:00	3.55%	0.45%
4:00	4.18%	0.53%
5:00	4.78%	0.73%
6:00	5.68%	0.90%
7:00	5.78%	0.90%
8:00	5.87%	0.97%
9:00	6.95%	1.43%
10:00	6.52%	1.21%
11:00	7.13%	1.18%
12:00	7.95%	1.29%
13:00	8.51%	1.23%
14:00	8.26%	1.22%
15:00	7.92%	1.27%
16:00	7.20%	1.18%
17:00	5.88%	0.72%
18:00	5.59%	0.44%
19:00	4.18%	0.30%
20:00	3.65%	0.19%
21:00	3.23%	0.14%
22:00	2.93%	0.10%
23:00	2.75%	0.10%
Average	5.31%	0.72%

Flying Weather by Month

Category	Jan	Feb	Mar	Apr	May	Jun	Jul	Aug	Sep	Oct	Nov	Dec	Year
Below VFR	14.49%	7.57%	3.29%	1.39%	1.45%	0.68%	0.71%	1.43%	4.18%	9.07%	9.13%	10.29%	5.31%
Below IFR	2.42%	0.56%	0.25%	0.03%	0.04%	0.08%	0.18%	0.15%	0.71%	1.92%	1.12%	1.14%	0.72%

PRECIPITATION

Canadian Normals from ECCC

	Jan	Feb	Mar	Apr	May	Jun	Jul	Aug	Sep	Oct	Nov	Dec	Year
Rainfall (mm)	132.8	83	75.2	47.5	37.5	30.6	17.9	23.8	31.1	88	148.4	129.7	845.3
Snowfall (cm)	10.9	6.3	3.4	0.4	0	0	0	0	0	0.2	4.7	13.7	39.7
Precipitation (mm)	143.2	89.3	78.4	47.9	37.5	30.6	17.9	23.8	31.1	88.1	152.6	142.5	882.9
Extreme Daily Rainfall (mm)	92.8	69.8	53.6	53.2	38.1	40.9	50	41.7	45.2	136	68.3	80.6	
Extreme Daily Snowfall (cm)	29.2	26	21.3	8.4	0	0	0	0	0	4.6	16.4	64.5	
Extreme Daily Precipitation (mm)	92.8	69.8	54.1	53.2	38.1	40.9	50	41.7	45.2	136	68.3	81.1	
Extreme Snow Depth (cm)	36	25	20	0	0	0	0	0	0	0	36	67	

DAYS WITH RAINFALL

Canadian Normals from ECCC

	Jan	Feb	Mar	Apr	May	Jun	Jul	Aug	Sep	Oct	Nov	Dec	Year
>= 0.2 mm	17.8	14.3	16.5	13.3	12	9.5	5.3	5.2	7.6	14	18.7	17.6	151.9
>= 5 mm	7.9	5.4	4.8	2.8	2.6	2.3	1.3	1.5	2.1	5.5	9	8.1	53.3
>= 10 mm	4.5	2.5	1.9	1	0.66	0.67	0.37	0.73	0.97	2.5	5.3	4.2	25.3
>= 25 mm	1	0.5	0.37	0.1	0	0	0.03	0.17	0.07	0.48	1.2	0.97	4.9

DAYS WITH SNOWFALL

	Jan	Feb	Mar	Apr	May	Jun	Jul	Aug	Sep	Oct	Nov	Dec	Year
>= 0.2 cm	2	1.7	0.93	0.13	0	0	0	0	0	0.03	1	2.2	8
>= 5 cm	0.9	0.43	0.3	0.03	0	0	0	0	0	0	0.43	0.77	2.9
>= 10 cm	0.43	0.13	0.1	0	0	0	0	0	0	0	0.17	0.43	1.3
>= 25 cm	0	0.03	0	0	0	0	0	0	0	0	0	0.07	0.1

TEMPERATURE

Canadian Normals from ECCC

	Jan	Feb	Mar	Apr	May	Jun	Jul	Aug	Sep	Oct	Nov	Dec	Year
Daily Average (°C)	4.6	5.1	6.8	9	12.1	14.9	16.9	16.8	14.2	10	6.4	4	10
Standard Deviation	1.4	1.5	1.1	0.9	1	0.9	0.9	0.7	0.8	0.7	1.6	1.4	0.5
Daily Maximum (°C)	7.6	8.8	10.8	13.6	16.9	19.9	22.4	22.4	19.6	14.2	9.7	7	14.4
Daily Minimum (°C)	1.5	1.3	2.6	4.3	7.2	9.8	11.3	11.1	8.6	5.7	3	1.1	5.6
Extreme Maximum (°C)	16.1	18.3	21.4	26.3	31.5	33.5	36.3	34.4	31.1	27.6	18.3	16.1	
Extreme Minimum (°C)	-15.6	-15	-10	-3.9	-1.1	2.1	4.1	4.4	-1.1	-4.4	-13.3	-14.4	

AVIATION WEATHER HAZARDS

	Jan	Feb	Mar	Apr	May	Jun	Jul	Aug	Sep	Oct	Nov	Dec	Year
Hrs. of Freezing Precip. Per Year	0.32	0.22	0	0	0	0	0	0	0	0	0	0.11	0.63
Hrs. of Thunderstorms Per Year	0	0	0	0	0.05	0	0.32	0.11	0.32	0	0.05	0	0.84

Missing Hourly Data – 2005