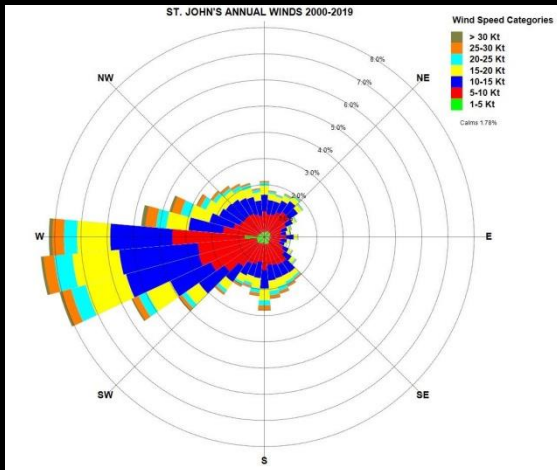
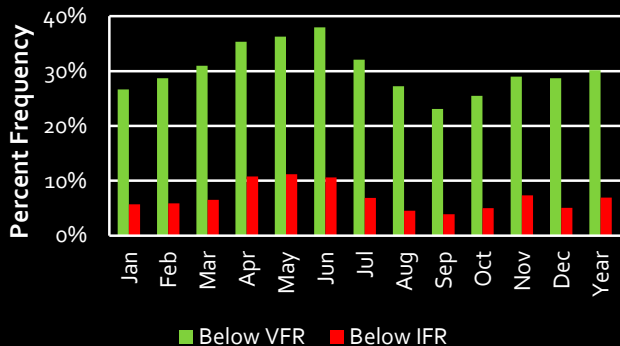
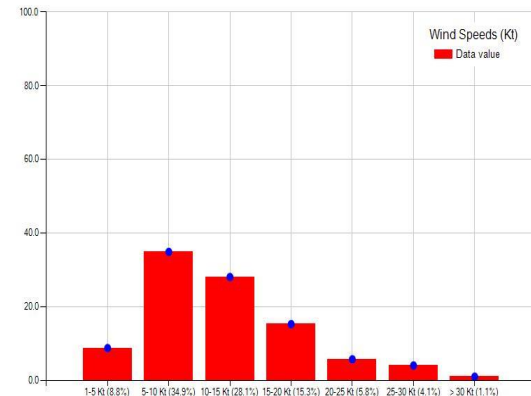


St. John's, NL

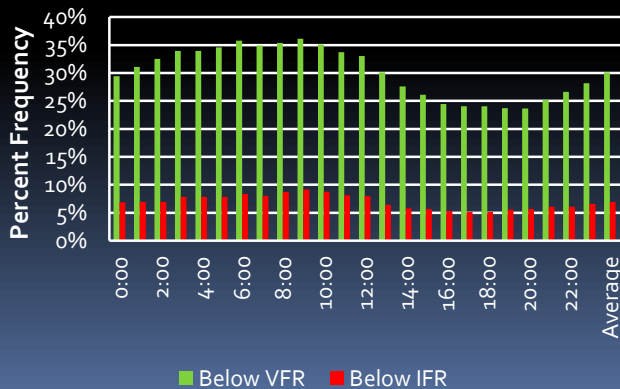
Flying Weather By Month St. John's A, NL 2000-2019



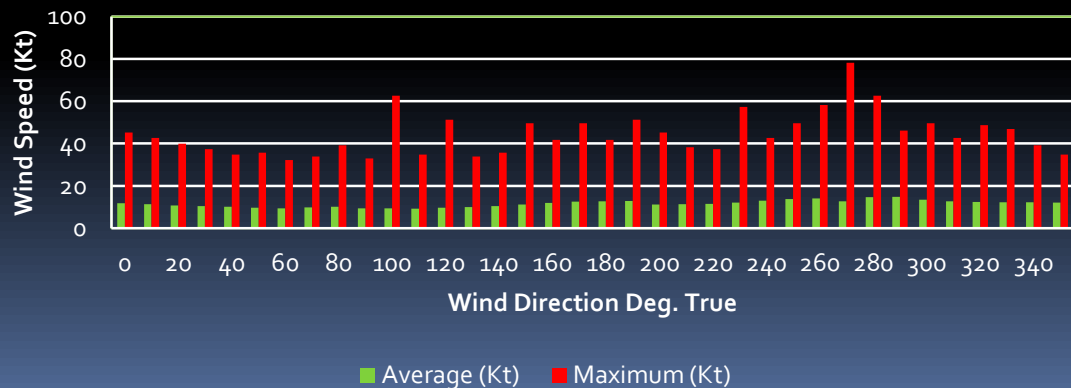
Wind Frequency Chart St. John's



Flying Weather By Time of Day (UCT) St. John's A, NL 2000-2019



Wind Speeds By Direction St. John's, NL 2000-2019



St. John's, NL Tables

Flying Weather By Hour of Day		
Hour(UCT)	Below VFR	Below IFR
0:00	29.43%	6.88%
1:00	31.11%	6.92%
2:00	32.54%	6.91%
3:00	33.96%	7.83%
4:00	33.96%	7.82%
5:00	34.55%	7.86%
6:00	35.78%	8.36%
7:00	34.89%	7.99%
8:00	35.38%	8.68%
9:00	36.13%	9.18%
10:00	35.12%	8.74%
11:00	33.71%	8.11%
12:00	33.05%	7.95%
13:00	30.08%	6.40%
14:00	27.59%	5.78%
15:00	26.10%	5.68%
16:00	24.43%	5.34%
17:00	24.05%	5.16%
18:00	24.04%	5.13%
19:00	23.68%	5.55%
20:00	23.65%	5.68%
21:00	25.22%	6.09%
22:00	26.60%	6.07%
23:00	28.18%	6.58%
Average	30.13%	6.95%

Flying Weather by Month													
Category	Jan	Feb	Mar	Apr	May	Jun	Jul	Aug	Sep	Oct	Nov	Dec	Year
Below VFR	26.67%	28.70%	30.98%	35.36%	36.28%	37.98%	32.09%	27.25%	23.12%	25.50%	28.98%	28.71%	30.13%
Below IFR	5.71%	5.90%	6.48%	10.80%	11.17%	10.61%	6.84%	4.55%	3.88%	5.00%	7.34%	5.08%	6.95%

PRECIPITATION													
Canadian Normals from ECCC													
	Jan	Feb	Mar	Apr	May	Jun	Jul	Aug	Sep	Oct	Nov	Dec	Year
Rainfall (mm)	66	61.6	84.8	96.1	97.9	97.5	91.6	100	129.6	153.7	124.8	102.9	1206.4
Snowfall (cm)	88.7	71	57.3	25.3	4.4	0	0	0	0	2.4	22.4	63.4	335
Precipitation (mm)	149.2	129.5	142.2	122.9	102.6	97.6	91.6	100	129.6	156.2	148.1	164.8	1534.2
Extreme Daily Rainfall (mm)	84.6	67.1	71.4	91.7	81.3	75.2	121.2	80.5	99.4	100.8	97.2	85.1	
Extreme Daily Snowfall (cm)	60.1	54.9	50	68.4	25.4	13.5	0	0	0.3	19.8	25.3	49.3	
Extreme Daily Precipitation (mm)	84.6	68.3	72	91.7	83.1	75.2	121.2	80.5	99.4	100.8	97.2	85.1	
Extreme Snow Depth (cm)	144	180	133	105	30	3	0	0	0	9	36	64	

DAYS WITH RAINFALL													
Canadian Normals from ECCC													
	Jan	Feb	Mar	Apr	May	Jun	Jul	Aug	Sep	Oct	Nov	Dec	Year
>= 0.2 mm	9.3	8.6	11	13.9	15.9	14.7	13.6	13.7	15.5	18.1	15.7	12.7	162.6
>= 5 mm	4.3	3.6	4.6	5.6	5.8	5.3	5.5	5.4	6.5	7.1	6.5	5.9	66
>= 10 mm	2.4	2.2	3	2.9	3.2	3.2	3	3.2	4	4.6	3.8	3.6	39.1
>= 25 mm	0.43	0.5	0.87	0.73	0.77	0.77	0.8	1.1	1.4	1.8	1.2	1.1	11.4

DAYS WITH SNOWFALL													
	Jan	Feb	Mar	Apr	May	Jun	Jul	Aug	Sep	Oct	Nov	Dec	Year
>= 0.2 cm	18.3	14.6	13.3	7	2.1	0.07	0	0	0	1.4	7.6	14.6	78.9
>= 5 cm	5.9	4.8	3.7	1.5	0.37	0	0	0	0	0.13	1.3	4.1	21.8
>= 10 cm	2.6	1.8	1.6	0.67	0.07	0	0	0	0	0.07	0.57	2	9.3
>= 25 cm	0.3	0.3	0.27	0.07	0	0	0	0	0	0	0	0.2	1.1

TEMPERATURE													
Canadian Normals from ECCC													
	Jan	Feb	Mar	Apr	May	Jun	Jul	Aug	Sep	Oct	Nov	Dec	Year
Daily Average (°C)	-4.5	-4.9	-2.6	1.9	6.4	10.9	15.8	16.1	12.4	7.4	3	-1.5	5
Standard Deviation	1.6	2.1	1.7	1.4	1.5	1.3	1.6	1.2	1.1	1.4	1.3	1.8	0.8
Daily Maximum (°C)	-0.8	-1.1	1	5.6	11.1	15.8	20.7	20.5	16.5	10.8	6.4	1.8	9
Daily Minimum (°C)	-8.2	-8.6	-6.1	-1.9	1.7	5.9	10.9	11.6	8.2	3.9	-0.3	-4.7	1
Extreme Maximum (°C)	15.7	16	18.3	24.1	25.6	29.4	31.5	31	29.5	24.6	19.4	17.3	
Extreme Minimum (°C)	-23.3	-23.8	-23.8	-14.8	-6.7	-3.3	-1.1	0.5	-1.1	-5.6	-13.4	-19.7	

AVIATION WEATHER HAZARDS													
	Jan	Feb	Mar	Apr	May	Jun	Jul	Aug	Sep	Oct	Nov	Dec	Year
Hrs. of Freezing Precip. Per Year	13.15	18.95	23.2	17.45	3.4	0	0	0	0	0	0.4	5.5	82.05
Hrs. of Thunderstorms Per Year	0	0.15	0	0	0.2	0.5	0.7	0.8	0.2	0.3	0.05	0	2.9

St. John's, NL Maximum Crosswinds 15 Kt FAA Wind Coverage Tool

2000-2019

