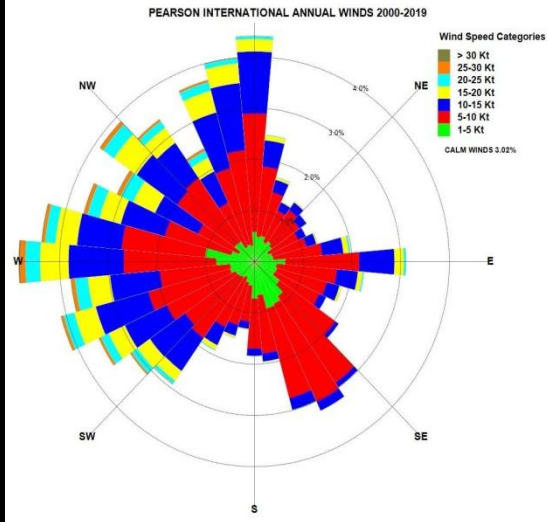
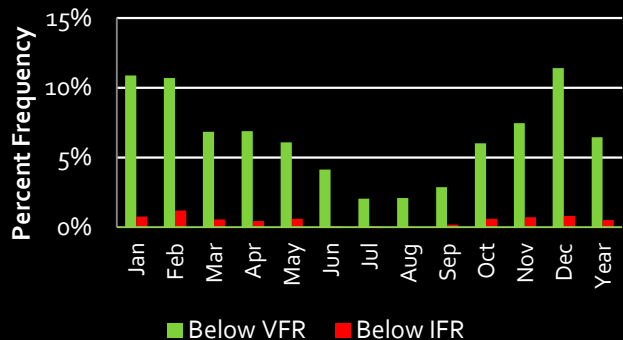
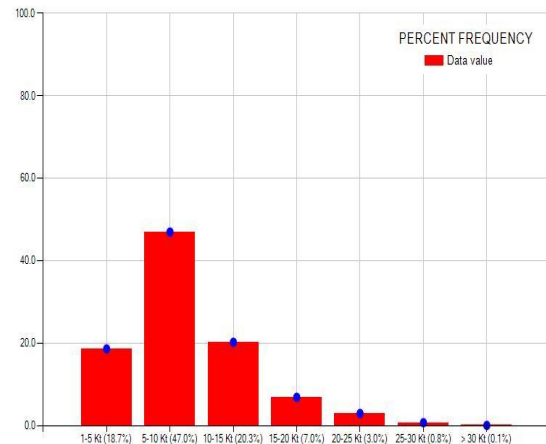


PEARSON INTERNATIONAL, ON

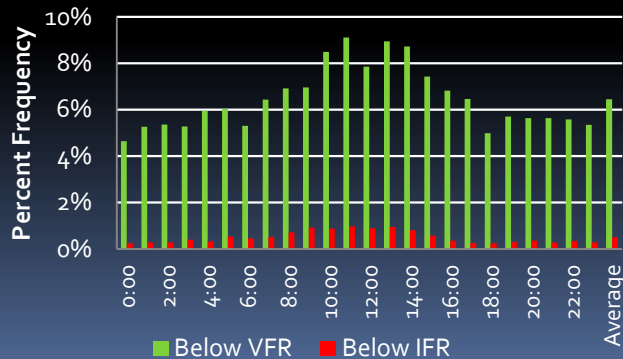
Flying Weather By Month Pearson International, ON 2000-2019



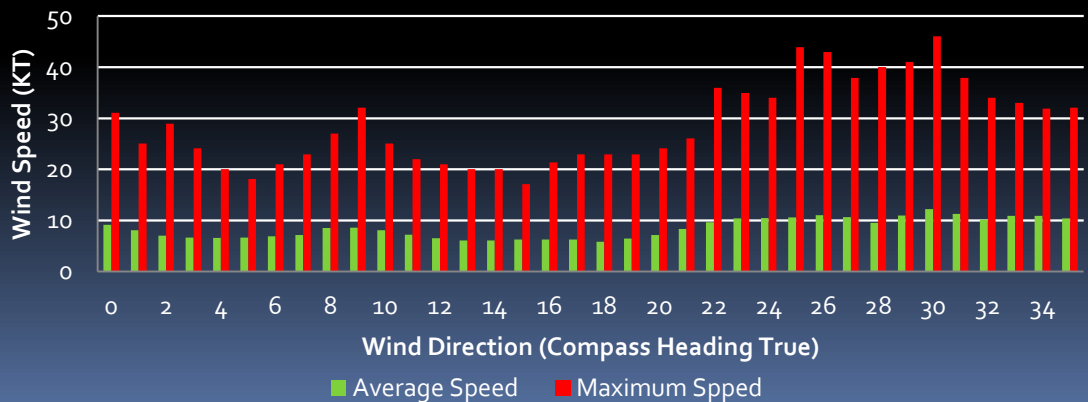
PEARSON INTERNATIONAL WIND SPEED FREQUENCY



Flying Weather By Time of Day (UCT) Pearson International, ON 2000-2019



Wind Speeds By Direction (Knots) Pearson International, ON 2000-2019



Pearson International, ON Tables

Flying Weather by Time of Day		
Hour(UCT)	Below VFR	Below IFR
0:00	4.64%	0.24%
1:00	5.26%	0.28%
2:00	5.37%	0.28%
3:00	5.28%	0.39%
4:00	5.95%	0.33%
5:00	6.03%	0.54%
6:00	5.30%	0.45%
7:00	6.43%	0.52%
8:00	6.93%	0.71%
9:00	6.96%	0.93%
10:00	8.49%	0.88%
11:00	9.12%	0.98%
12:00	7.85%	0.89%
13:00	8.94%	0.95%
14:00	8.73%	0.81%
15:00	7.43%	0.58%
16:00	6.83%	0.36%
17:00	6.47%	0.26%
18:00	4.99%	0.25%
19:00	5.71%	0.30%
20:00	5.63%	0.36%
21:00	5.64%	0.27%
22:00	5.58%	0.34%
23:00	5.35%	0.28%
Average	6.45%	0.51%

Flying Weather by Month													
Category	Jan	Feb	Mar	Apr	May	Jun	Jul	Aug	Sep	Oct	Nov	Dec	Year
Below VFR	10.88%	10.70%	6.85%	6.90%	6.10%	4.13%	2.05%	2.09%	2.87%	6.02%	7.45%	11.40%	6.45%
Below IFR	0.76%	1.20%	0.56%	0.45%	0.60%	0.08%	0.08%	0.03%	0.19%	0.62%	0.73%	0.81%	0.51%

PRECIPITATION													
Canadian Normals from ECCC													
	Jan	Feb	Mar	Apr	May	Jun	Jul	Aug	Sep	Oct	Nov	Dec	Year
Rainfall (mm)	25.1	24.3	32.6	63	74.3	71.5	75.7	78.1	74.5	60.6	68	34	681.6
Snowfall (cm)	29.5	24	17.7	4.5	0	0	0	0	0	0.4	7.5	24.9	108.5
Precipitation (mm)	51.8	47.7	49.8	68.5	74.3	71.5	75.7	78.1	74.5	61.1	75.1	57.9	785.9
Extreme Daily Rainfall (mm)	58.7	31.8	41.7	55.8	92.7	53.8	118.5	80.8	108	121.4	86.1	40.9	
Extreme Daily Snowfall (cm)	36.8	39.9	32.3	26.7	2.3	0	0	0	0	7.4	33.5	28.2	
Extreme Daily Precipitation (mm)	58.7	55.9	41.7	55.8	92.7	53.8	118.5	80.8	108	121.4	86.1	40.9	
Extreme Snow Depth (cm)	67	48	30	13	0	0	0	0	0	13	18	36	

DAYS WITH RAINFALL													
Canadian Normals from ECCC													
	Jan	Feb	Mar	Apr	May	Jun	Jul	Aug	Sep	Oct	Nov	Dec	Year
>= 0.2 mm	5.4	4.6	7.4	11.3	12.5	10.8	10.4	10.2	10.5	12	11	7.1	113.2
>= 5 mm	1.6	1.7	2.1	4.2	4.8	5	4.1	4.2	4.5	3.8	4.1	2.6	42.6
>= 10 mm	0.77	0.93	1.1	2.1	2.4	2.5	2.6	2.4	2.4	2	2.4	1.1	22.5
>= 25 mm	0.07	0.1	0.03	0.23	0.27	0.4	0.83	0.9	0.6	0.2	0.5	0.1	4.2

DAYS WITH SNOWFALL													
	Jan	Feb	Mar	Apr	May	Jun	Jul	Aug	Sep	Oct	Nov	Dec	Year
>= 0.2 cm	12.1	9.4	6.8	2.4	0.03	0	0	0	0	0.3	3.4	10	44.4
>= 5 cm	1.7	1.5	1.2	0.23	0	0	0	0	0	0	0.43	1.5	6.6
>= 10 cm	0.5	0.33	0.33	0.03	0	0	0	0	0	0	0.13	0.5	1.8
>= 25 cm	0	0.07	0	0	0	0	0	0	0	0	0	0	0.07

TEMPERATURE													
Canadian Normals from ECCC													
	Jan	Feb	Mar	Apr	May	Jun	Jul	Aug	Sep	Oct	Nov	Dec	Year
Daily Average (°C)	-5.5	-4.5	0.1	7.1	13.1	18.6	21.5	20.6	16.2	9.5	3.7	-2.2	8.2
Standard Deviation	3.2	2.3	2	1.6	1.9	1.6	1.5	1.5	1.6	1.5	1.5	2.6	1
Daily Maximum (°C)	-1.5	-0.4	4.6	12.2	18.8	24.2	27.1	26	21.6	14.3	7.6	1.4	13
Daily Minimum (°C)	-9.4	-8.7	-4.5	1.9	7.4	13	15.8	15.1	10.8	4.6	-0.2	-5.8	3.3
Extreme Maximum (°C)	17.6	14.9	25.6	31.1	34.4	36.7	37.6	38.3	36.7	31.6	25	20	
Extreme Minimum (°C)	-31.3	-31.1	-28.9	-17.2	-5.6	0.6	3.9	1.1	-3.9	-8.3	-18.3	-31.1	

AVIATION WEATHER HAZARDS													
	Jan	Feb	Mar	Apr	May	Jun	Jul	Aug	Sep	Oct	Nov	Dec	Year
Hrs. of Freezing Precip. Per Year	3.26	3.84	2.21	2.53	0.00	0.00	0.00	0.00	0.00	0.00	0.47	4.53	16.84
Hrs. of Thunderstorms Per Year	0.11	0.32	0.32	1.74	4.21	4.95	5.11	4.32	1.89	0.53	0.11	0.11	23.68

Missing Hourly Data – 2005