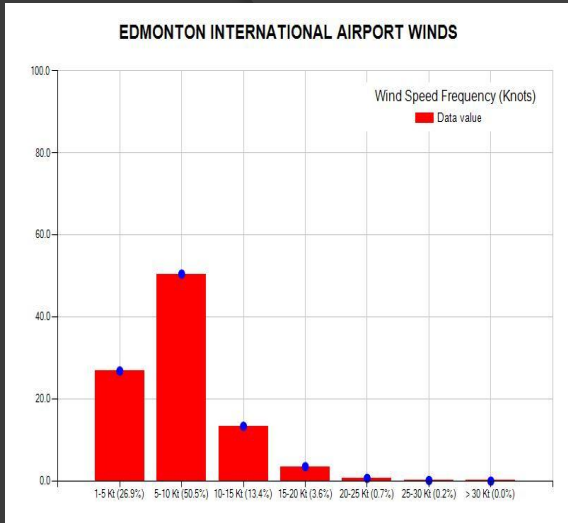
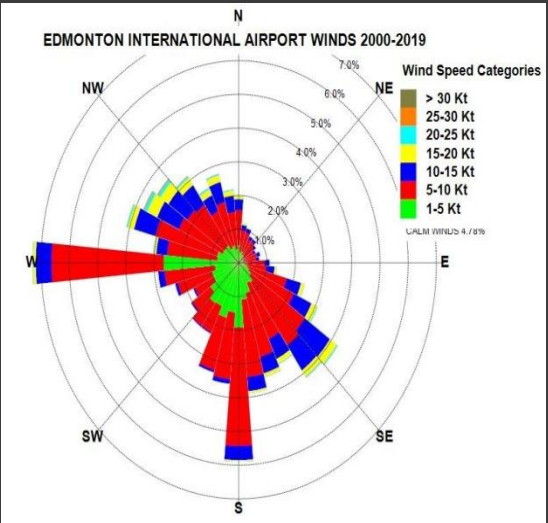
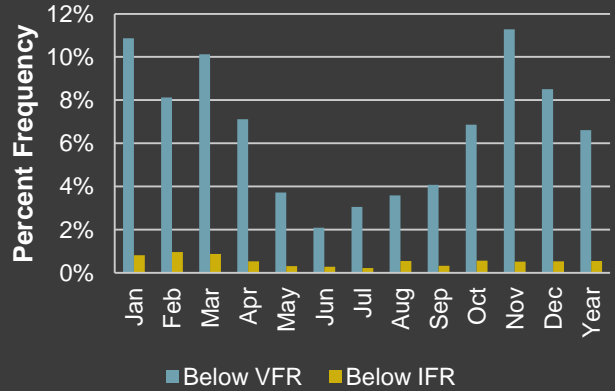
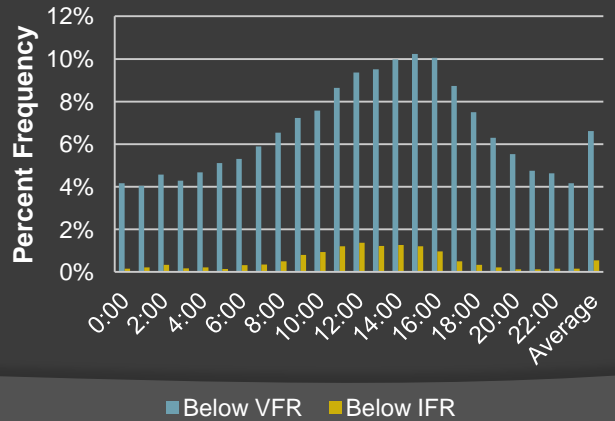


# Edmonton International, AB

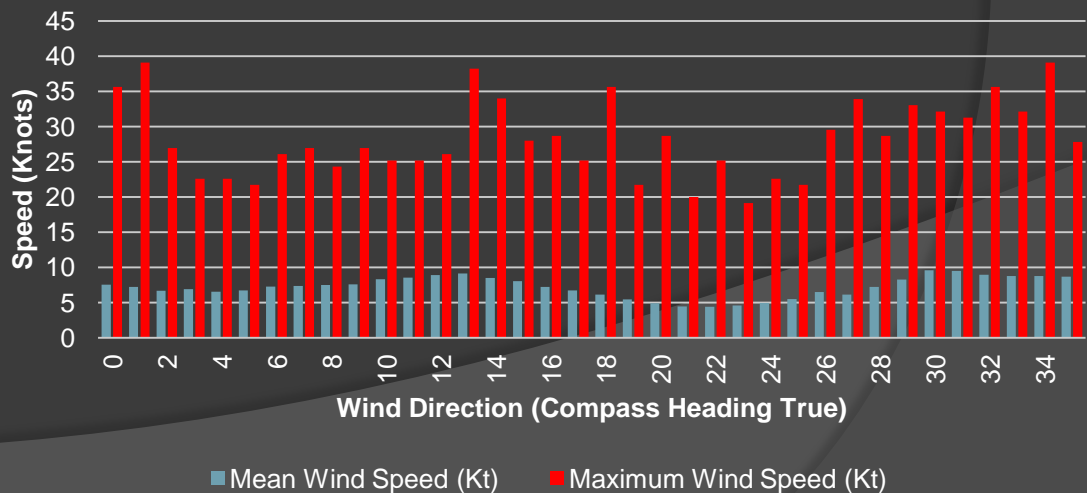
## Flying Weather By Month Edmonton A, AB 2000-2019



## Flying Weather By Time of Day (UCT) Edmonton A, AB 2000-2019



## Wind Speeds By Direction (Knots) Edmonton International Airport, AB 2000-2019



# Edmonton A, AB Tables

Flying Weather by Time of Day		
Hour(UCT)	Below VFR	Below IFR
0:00	4.16%	0.16%
1:00	4.05%	0.22%
2:00	4.57%	0.33%
3:00	4.29%	0.17%
4:00	4.68%	0.21%
5:00	5.11%	0.13%
6:00	5.31%	0.32%
7:00	5.89%	0.35%
8:00	6.53%	0.49%
9:00	7.23%	0.79%
10:00	7.58%	0.94%
11:00	8.64%	1.21%
12:00	9.37%	1.37%
13:00	9.52%	1.22%
14:00	9.98%	1.26%
15:00	10.23%	1.21%
16:00	10.06%	0.96%
17:00	8.73%	0.49%
18:00	7.50%	0.33%
19:00	6.30%	0.22%
20:00	5.53%	0.13%
21:00	4.75%	0.13%
22:00	4.63%	0.16%
23:00	4.16%	0.15%
Average	6.62%	0.54%

Flying Weather by Month													
Category	Jan	Feb	Mar	Apr	May	Jun	Jul	Aug	Sep	Oct	Nov	Dec	Year
Below VFR	10.87%	8.12%	10.13%	7.11%	3.73%	2.09%	3.05%	3.58%	4.08%	6.87%	11.28%	8.50%	6.62%
Below IFR	0.81%	0.96%	0.88%	0.54%	0.30%	0.28%	0.22%	0.55%	0.33%	0.57%	0.51%	0.53%	0.54%

PRECIPITATION													
Canadian Normals from ECCC													
	Jan	Feb	Mar	Apr	May	Jun	Jul	Aug	Sep	Oct	Nov	Dec	Year
Rainfall (mm)	1.4	0.5	0.9	14.9	42.9	72.7	95.6	54.9	40.3	12.6	1.6	0.8	338.8
Snowfall (cm)	21.7	13.4	17.5	14.4	6.5	0	0	0.1	1.1	10.4	17.3	15.9	118.1
Precipitation (mm)	20.8	11.9	16.5	28.7	49.4	72.7	95.6	54.9	41.3	22.6	17.3	14.5	446.1
Extreme Daily Rainfall (mm)	10.4	4	6.9	43.4	40.9	66.3	75.6	69.5	60.5	23.7	8.6	4.6	
Extreme Daily Snowfall (cm)	33.6	19.1	21.1	36.2	20.6	0	0	2	8.6	31.5	15.9	16.8	
Extreme Daily Precipitation (mm)	38.6	15	18.5	43.4	41.6	66.3	75.6	69.5	60.5	30.4	14.2	16.2	

DAYS WITH RAINFALL													
Canadian Normals from ECCC													
	Jan	Feb	Mar	Apr	May	Jun	Jul	Aug	Sep	Oct	Nov	Dec	Year
>= 0.2 mm	1.1	0.6	1.3	5.3	10.7	13.8	14.7	11.7	9.7	5.7	1.6	0.67	76.8
>= 5 mm	0.07	0	0	0.73	2.8	4.7	5.5	3.6	2.5	0.67	0.03	0	20.6
>= 10 mm	0	0	0	0.27	1.2	2.3	2.9	1.5	1.1	0.27	0	0	9.5
>= 25 mm	0	0	0	0.03	0.17	0.52	0.77	0.23	0.1	0	0	0	1.8

DAYS WITH SNOWFALL													
	Jan	Feb	Mar	Apr	May	Jun	Jul	Aug	Sep	Oct	Nov	Dec	Year
>= 0.2 cm	9.9	8.3	8.4	4.1	1.6	0	0	0.03	0.5	3.3	7.8	9.3	53.2
>= 5 cm	1.2	0.47	0.87	0.83	0.37	0	0	0	0.07	0.63	1.1	0.6	6.1
>= 10 cm	0.2	0.1	0.23	0.27	0.23	0	0	0	0	0.3	0.17	0.07	1.6
>= 25 cm	0.03	0	0	0.03	0	0	0	0	0	0.03	0	0	0.09

TEMPERATURE													
Canadian Normals from ECCC													
	Jan	Feb	Mar	Apr	May	Jun	Jul	Aug	Sep	Oct	Nov	Dec	Year
Daily Average (°C)	-12.1	-9.9	-4.4	4.2	10.2	14.1	16.2	15.2	10.2	3.8	-5.4	-11	2.6
Standard Deviation	4.6	3.8	4	2.1	1.5	1	0.9	1.6	1.8	1.7	3.9	4.6	1.1
Daily Maximum (°C)	-6.3	-3.8	1.2	10.8	17.4	20.6	22.8	22.2	17.4	10.4	-0.1	-5.5	8.9
Daily Minimum (°C)	-17.7	-15.9	-10	-2.5	3	7.6	9.5	8.1	3	-2.9	-10.6	-16.5	-3.7
Extreme Maximum (°C)	9.9	13.3	24.2	30.5	32.8	34.4	35	35.6	34.9	29.1	18.8	15.9	
Extreme Minimum (°C)	-49.3	-42.0	-42.7	-38.2	-31.6	-21	-11	-2.8	0.6	26.5	26.4	16.1	

AVIATION WEATHER													
HAZARDS													
	Jan	Feb	Mar	Apr	May	Jun	Jul	Aug	Sep	Oct	Nov	Dec	Year
Hrs. of Freezing Precip. Per Year	2.7	0.3	1.4	0.2	0.2	0.1	0.1	0.1	0.1	0.7	2.5	1.6	10.3
Hrs. of Thunderstorms Per Year	0	0	0	0	2.5	7.3	15.3	7.1	1.8	0	0	0	34.0